

# Miami River - Miami Intermodal Center Capacity Improvement

# MR-MICCI

FM # 429487-2-52-01

May 5, 2025



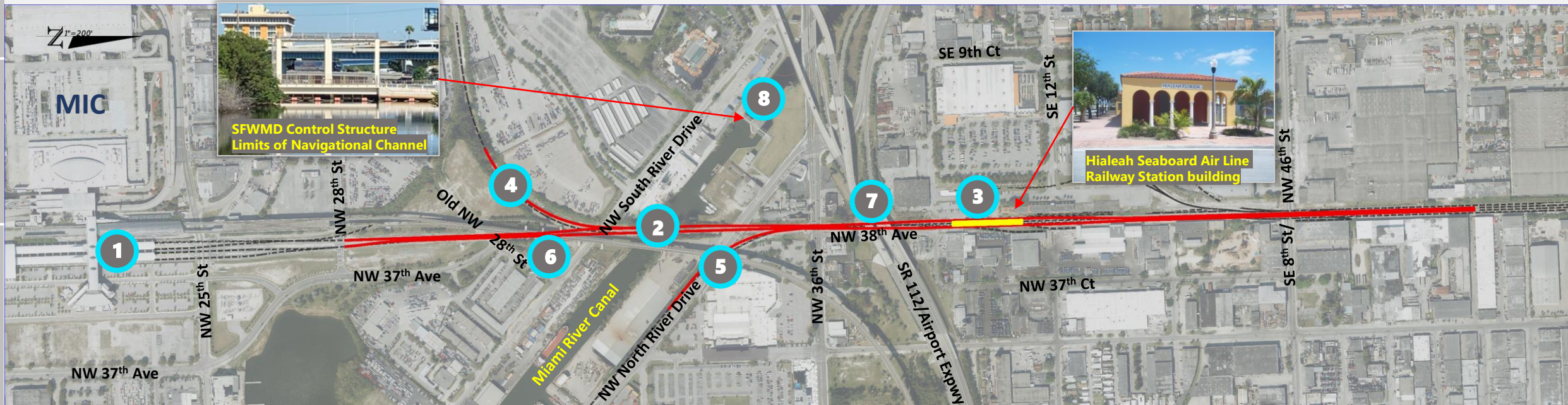


# PROJECT OVERVIEW

## Project Location Map

- 1 Existing Tri-Rail Miami Airport Station @ MICC
- 2 Existing bascule bridge/**Proposed fixed bridge**
- 3 **Hialeah Market Station**
- 4 Homestead Spur
- 5 Downtown Spur
- 6 Existing Metrorail crossing
- 7 Existing SR 112 bridge crossing
- 8 SFWMD Control Structure

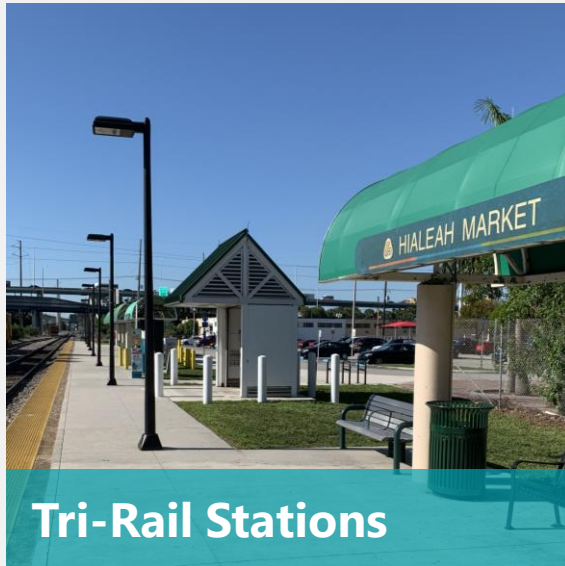
**From just north of Tri-Rail Hialeah Market Station (MP 1035.96) to just north of Tri-Rail Miami Airport Station (MP 1037.21)**





# EXISTING CONDITIONS

## STATIONS/STRUCTURES



**Tri-Rail Stations**

- Hialeah Market Station and adjacent Hialeah Seaboard Air Line Railway Station building



**Miami River Crossing**

- Single Track Bascule Bridge
- NRHP-eligible historic resource
- Limited bridge openings (On-call bridge tender)



**Roadway Over SFRC**

- Airport Expressway (SR 112)
- Eastbound SR 112
- Westbound SR 112
- Westbound Ramp to NW 36th Street



**Metrorail Over SFRC**

- Metrorail Orange Line (Airport Extension)



# EXISTING CONDITIONS

## TRACK CORRIDOR

- Single mainline track from North of NW 46<sup>th</sup> Street/ SE 8<sup>th</sup> Street to north of the new NW 28<sup>th</sup> Street
- Right-of way width varies from 50-ft to 100-ft
- Land use is primarily industrial
- Seven at-grade railroad/roadway crossings
  - NW 25<sup>th</sup> Street
  - NW 28<sup>th</sup> Street
  - Old NW 28<sup>th</sup> Street
  - NW South River Drive
  - NW North River Drive
  - NW 36<sup>th</sup> Street
  - NW 46<sup>th</sup> Street/SE 8<sup>th</sup> Street
- Two spurs
  - Downtown Lead
  - Homestead Subdivision
- Sidings





# PROPOSED IMPROVEMENTS

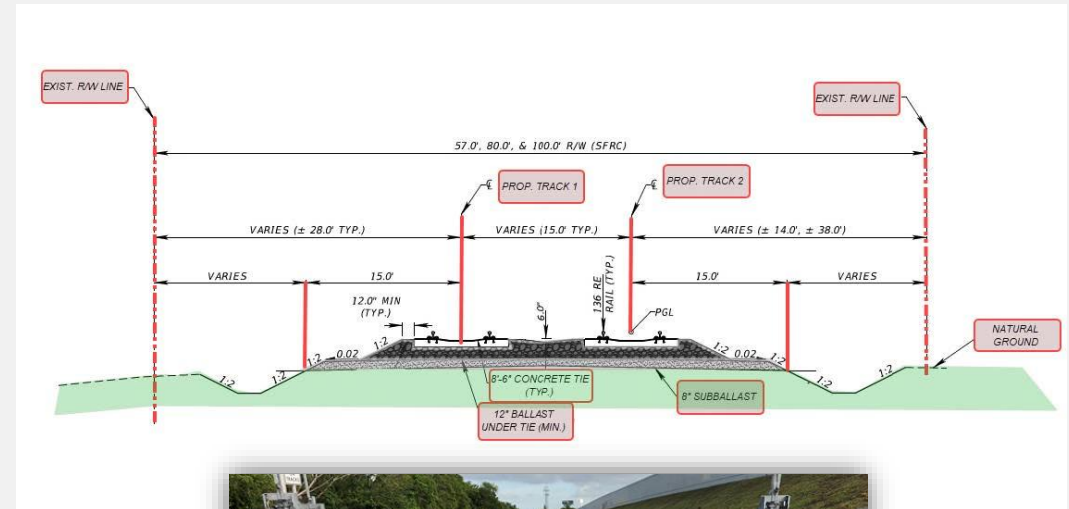
## PROPOSED RAILROAD TRACKS

Addition of a second mainline track for adding capacity to SFRC

*Existing Single Track*

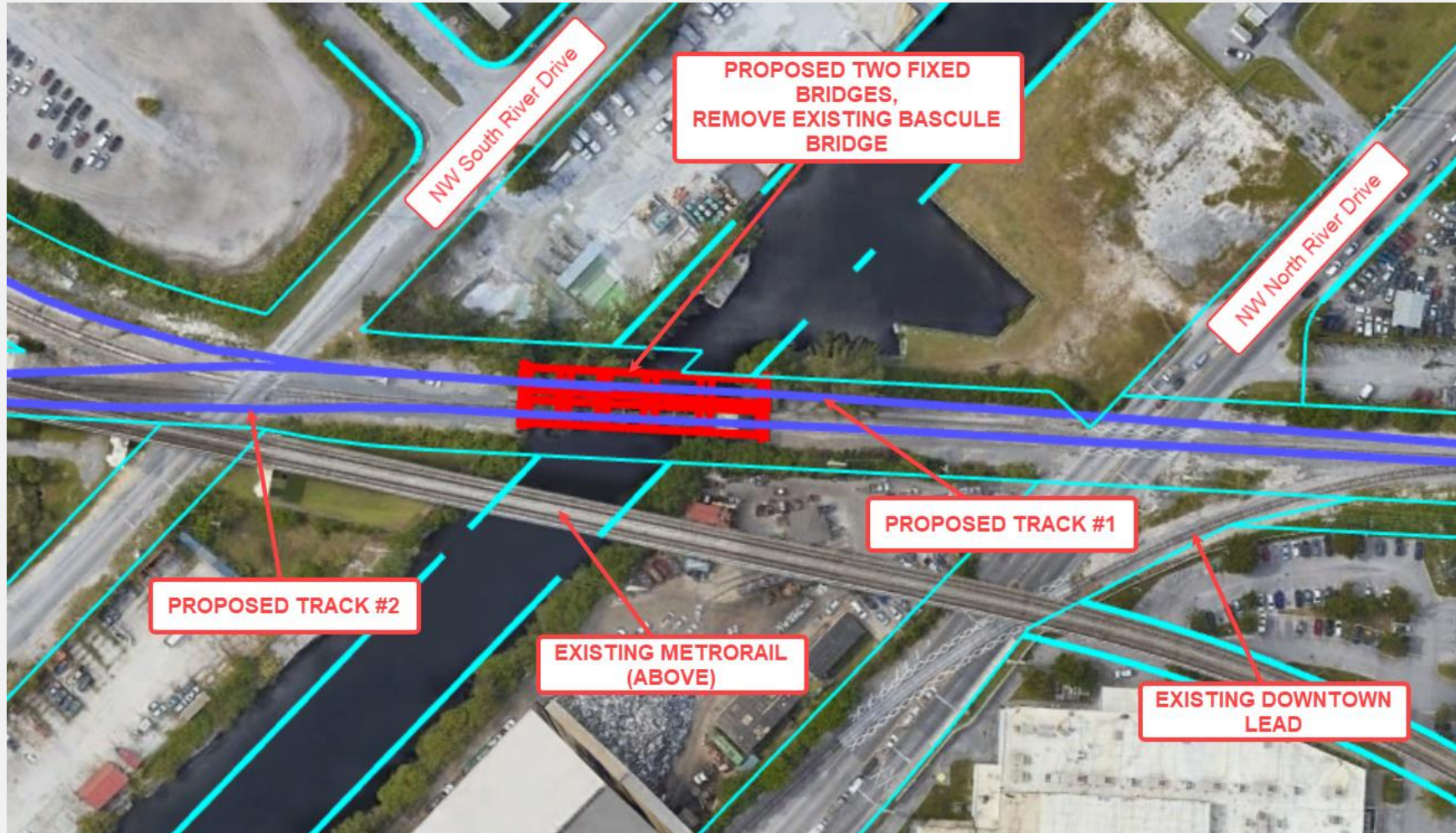


*Proposed Double Track*





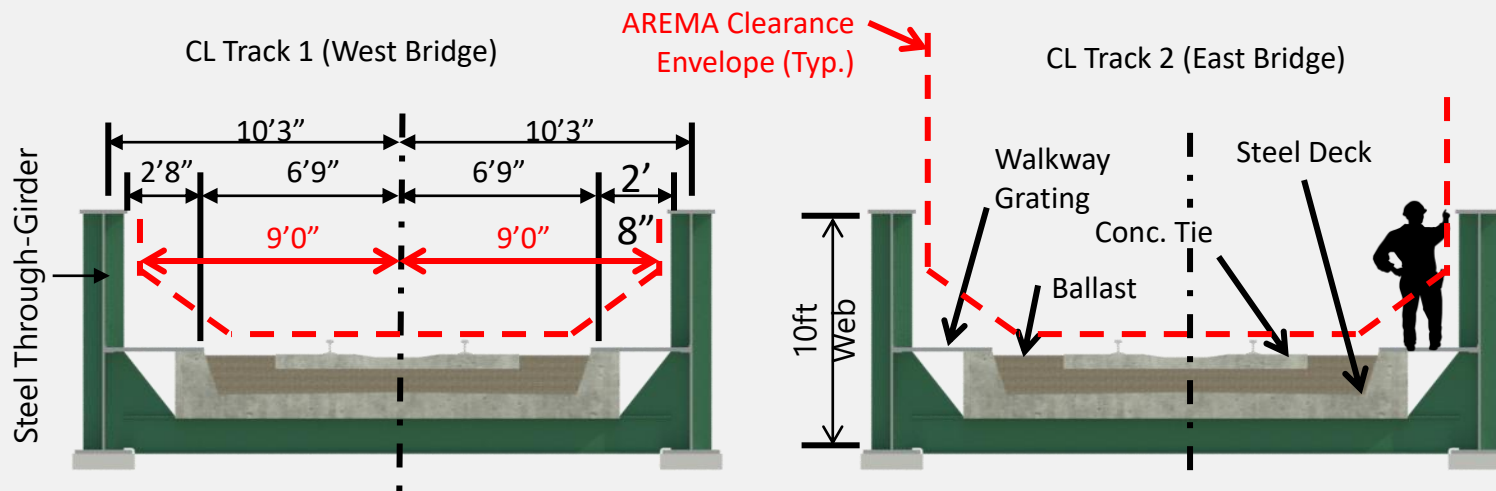
## REPLACE EXISTING MOVABLE BRIDGE WITH TWO FIXED SINGLE-TRACK BRIDGES





# PROPOSED IMPROVEMENTS

## PROPOSED TWIN BRIDGES OVER MIAMI RIVER



**Both bridges have same dimensions**

# PROPOSED IMPROVEMENTS

## PROPOSED BRIDGE OVER MIAMI RIVER

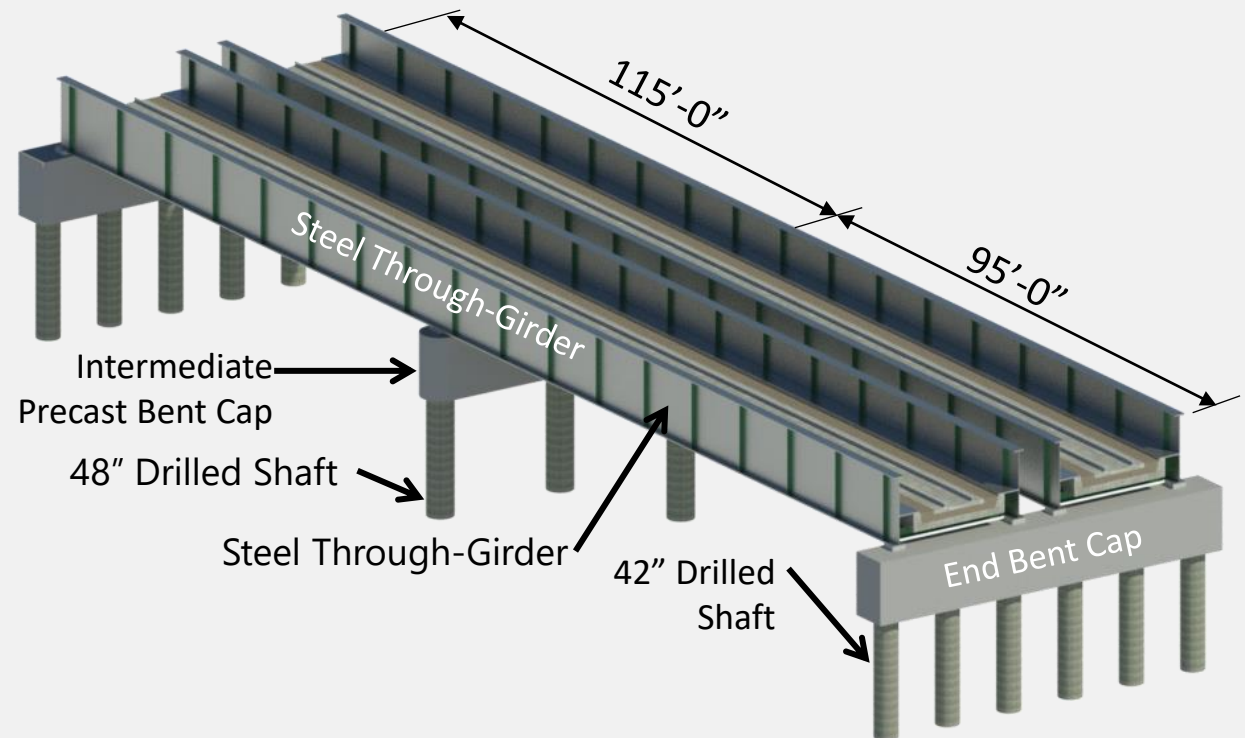
- Two parallel bridges
- CSX preferred details
- AREMA design criteria

### Substructure

- Cast-in-place concrete caps construction
- Designed for vessel impact

### Superstructure

- Two simple spans (115ft & 95ft)
- Steel through-girders
- Ballast steel deck plate
- Steel grating walkway
- Meets AREMA clearances





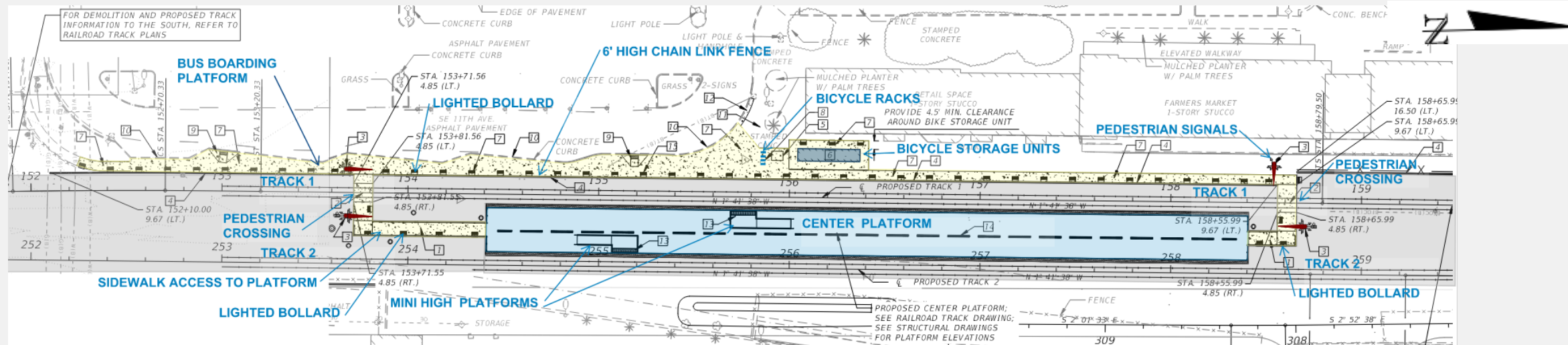
# PROPOSED IMPROVEMENTS

## CONSTRUCT A 400-FT CENTER PLATFORM AT HIALEAH MARKET STATION

- Primary and emergency egress points
- Single continuous canopy
- Near historic Hialeah Seaboard Airline Railway Station building
- Reconfigure the site
- Requires temporary closure of station (approx. 6-8 weeks)



### Center Platform Plan View

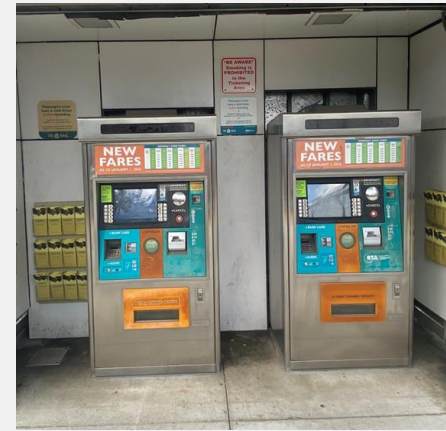




# PROPOSED IMPROVEMENTS

## CONSTRUCT A 400-FT CENTER PLATFORM AT HIALEAH MARKET STATION

- Tri-Rail Station blue canopy (i.e., Pompano Beach Station) distinct from the NRHP-listed Hialeah Seaboard Air Line Railway Station
- Reconfigured site for new bus parking, bicycle racks and storage units, trash receptacles, seating, and ticketing
- New station protection features (fencing and bollards), signing and lighting
- Construction requires approximately temporary closure of station (temporary bus shuttle to be provided)





# PROPOSED IMPROVEMENTS

## HISTORIC MARKER

- Coordinated with State Historic Preservation Officer (SHPO)
- Complies with PD&E Commitment and MOA with DHR
- Standard State Marker proposed at Tri-Rail Hialeah-Market Station
- Public awareness of the history of Seaboard Airline Railroad (SAL), SAL Station, Miami River, and the single span rolling lift movable bridge.





# PROPOSED IMPROVEMENTS

## UPGRADE RAILROAD SIGNALS, POSITIVE TRAIN CONTROL, AND CROSSINGS

Introduction

Project Overview

Proposed Improvements

TTCP

Schedule and Cost



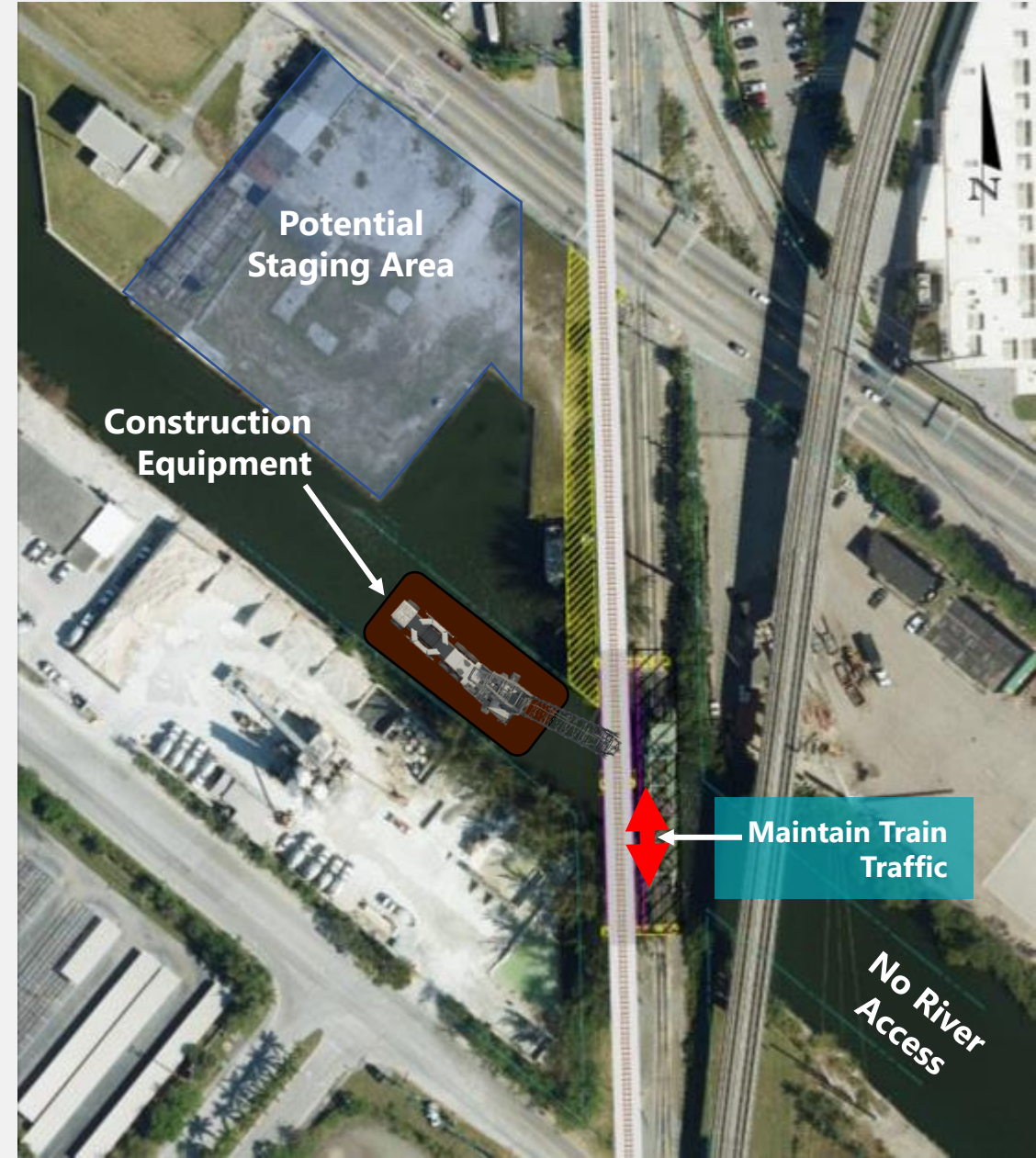


## ANTICIPATED CONSTRUCTION

- Construct temporary tracks for phasing of construction
- Construct bridge replacement
  - Phase 1 – construct west bridge and maintain train service on existing bridge
  - Phase 2A – shift train service to newly constructed west bridge, demolish existing bridge
  - Phase 2B – maintain service on newly constructed west bridge and construct new east bridge
- Construct railroad crossings and with roadway closure and use detours
- Construct tracks and signals
- Construct Tri-Rail Hialeah Market Station
- Construct remaining railroad crossings – close roadways and use detours

## PROPOSED BRIDGE OVER MIAMI RIVER

- Construction Phase 1 - West Bridge
  - Maintain train traffic on existing bridge
  - All access separated from existing bridge
  - Construct from cranes on barge

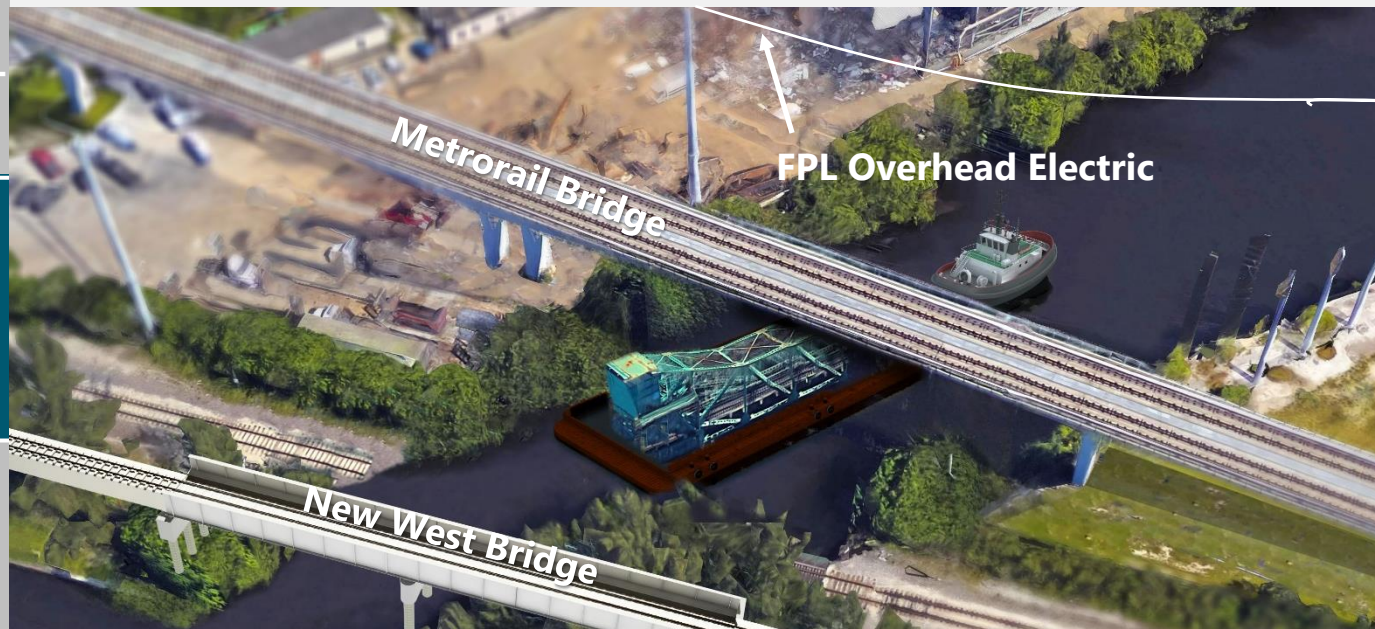




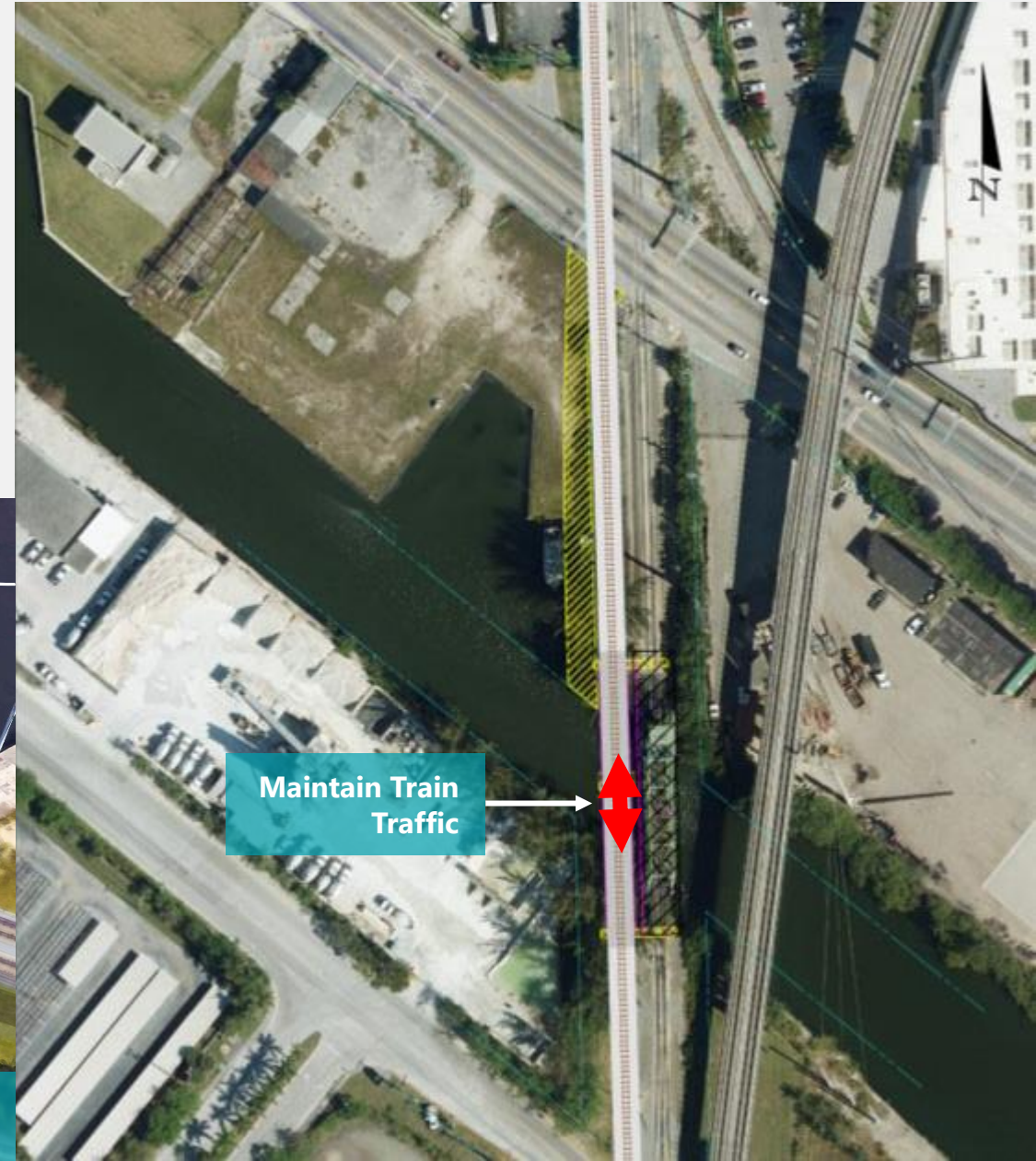
# TEMPORARY TRAFFIC CONTROL PLAN

## BRIDGE REPLACEMENT PHASING

- Construction Phase 2A – Demolition
  - Shift railroad traffic to new west bridge
  - Demolish existing bascule bridge from barges
  - Float out bascule leaf in one piece
  - Existing foundations can be cut off at mudline (cofferdams not needed for containment)



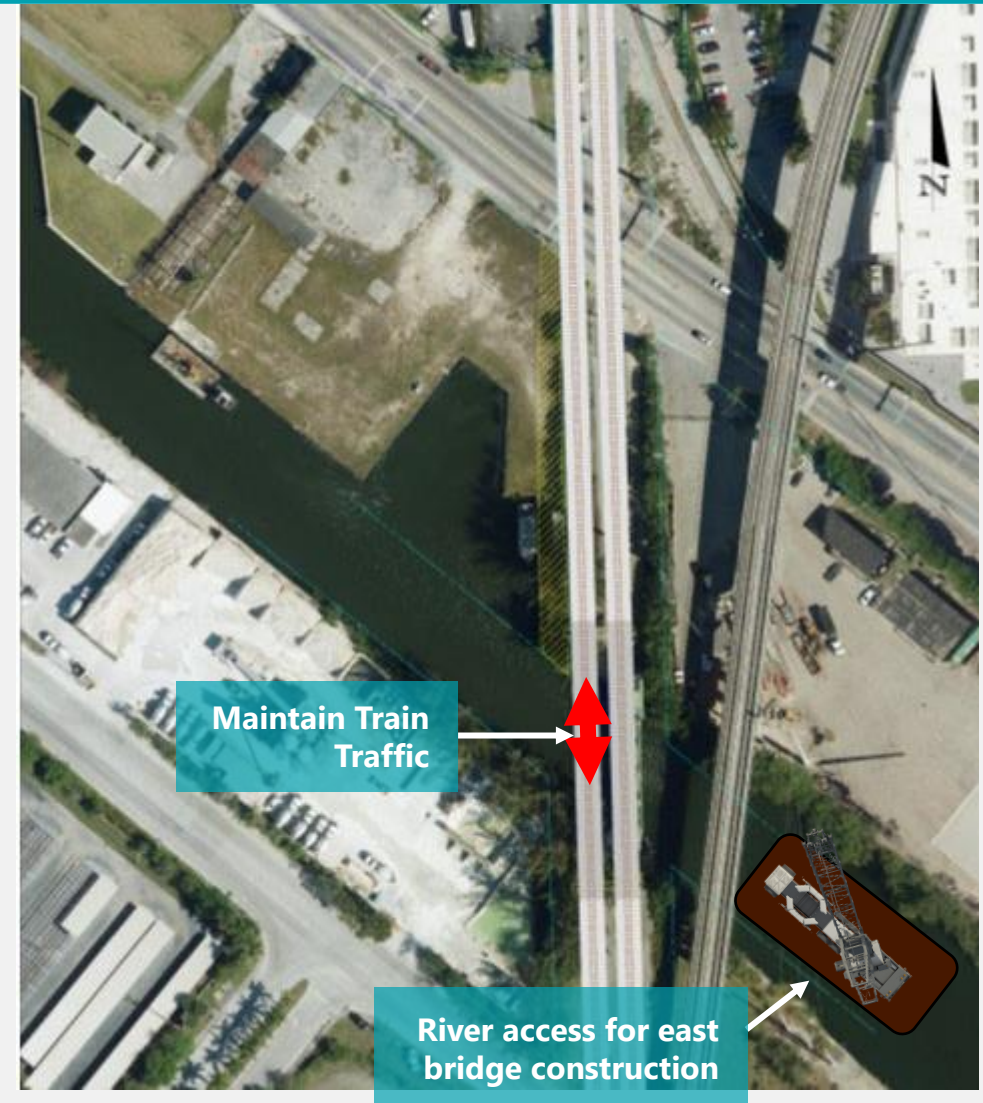
Float Out Bascule Demolition





## BRIDGE REPLACEMENT PHASING

- Construction Phase 2B – East Bridge
  - Maintain railroad traffic on new west bridge
  - Use barges to construct east bridge
  - Maintain clearance from existing Metrorail bridge
  - Avoid or minimize impacts to utilities





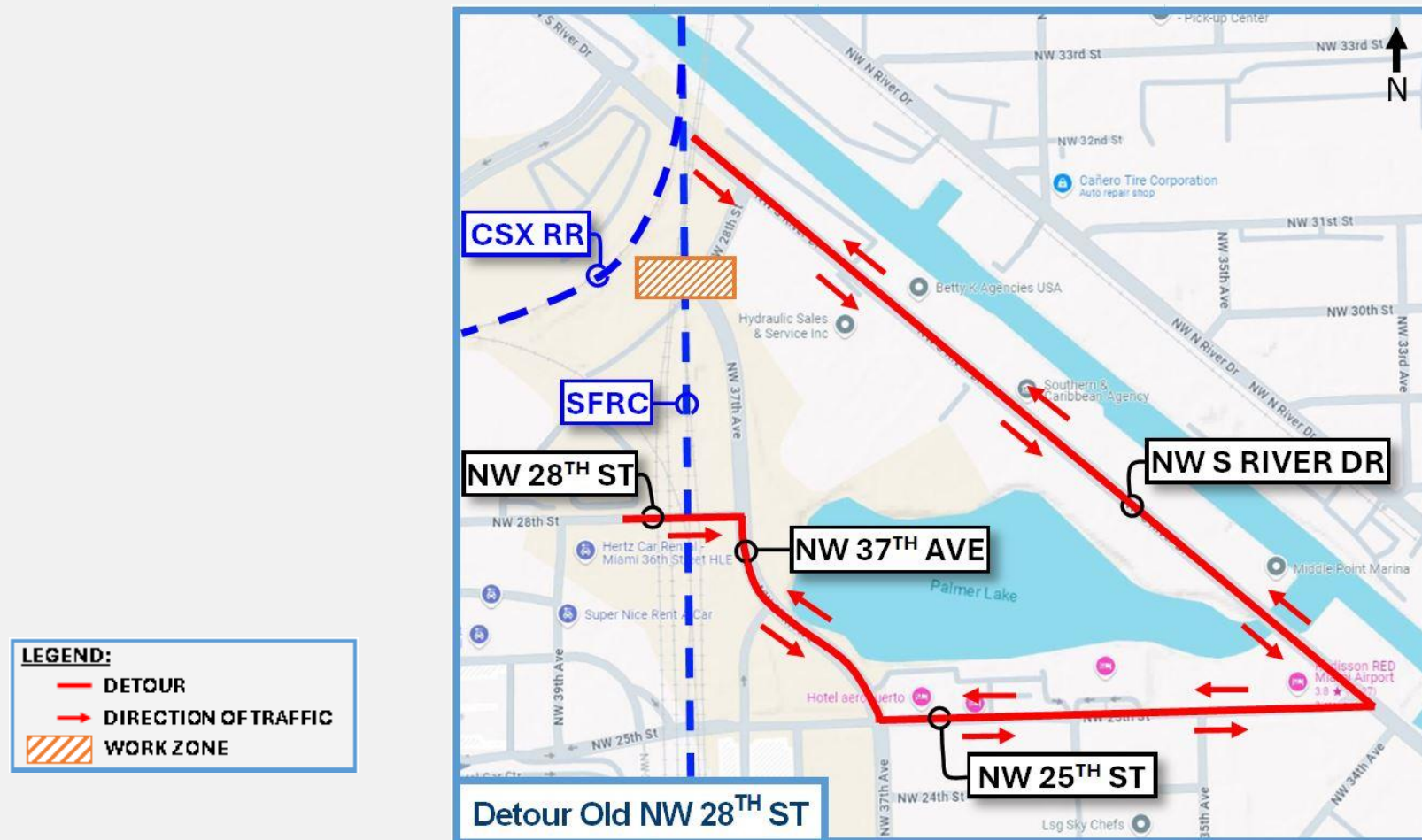
## RAILROAD CROSSINGS RECONSTRUCTION

- Temporary road closures
  - Use continuous full roadway closures and detours – approximately 5 days duration (max), including weekends, for each crossing
  - No concurrent road closures and detours for more than one crossing shall be allowed
  - Advanced notice of 14 days shall be provided prior to closures and detours
  - Typical phasing of construction for crossings requiring closures:
    - 1) Install Temp. Traffic Control Devices to close road and detour traffic
    - 2) Construct rail crossings
    - 3) Reconstruct Roadway East of the track crossing
    - 4) Reconstruct Roadway West of the track crossing (lane closures)
      - Step 1 – Shift traffic to north side (two lanes, one lane per direction)
      - Step 2 – Shift traffic to south side (two lanes, one lane per direction)
    - 5) Complete roadway construction and signing and markings

# TEMPORARY TRAFFIC CONTROL PLAN

## RAILROAD CROSSINGS RECONSTRUCTION

- Closure and Detour – Old NW 28<sup>th</sup> Street

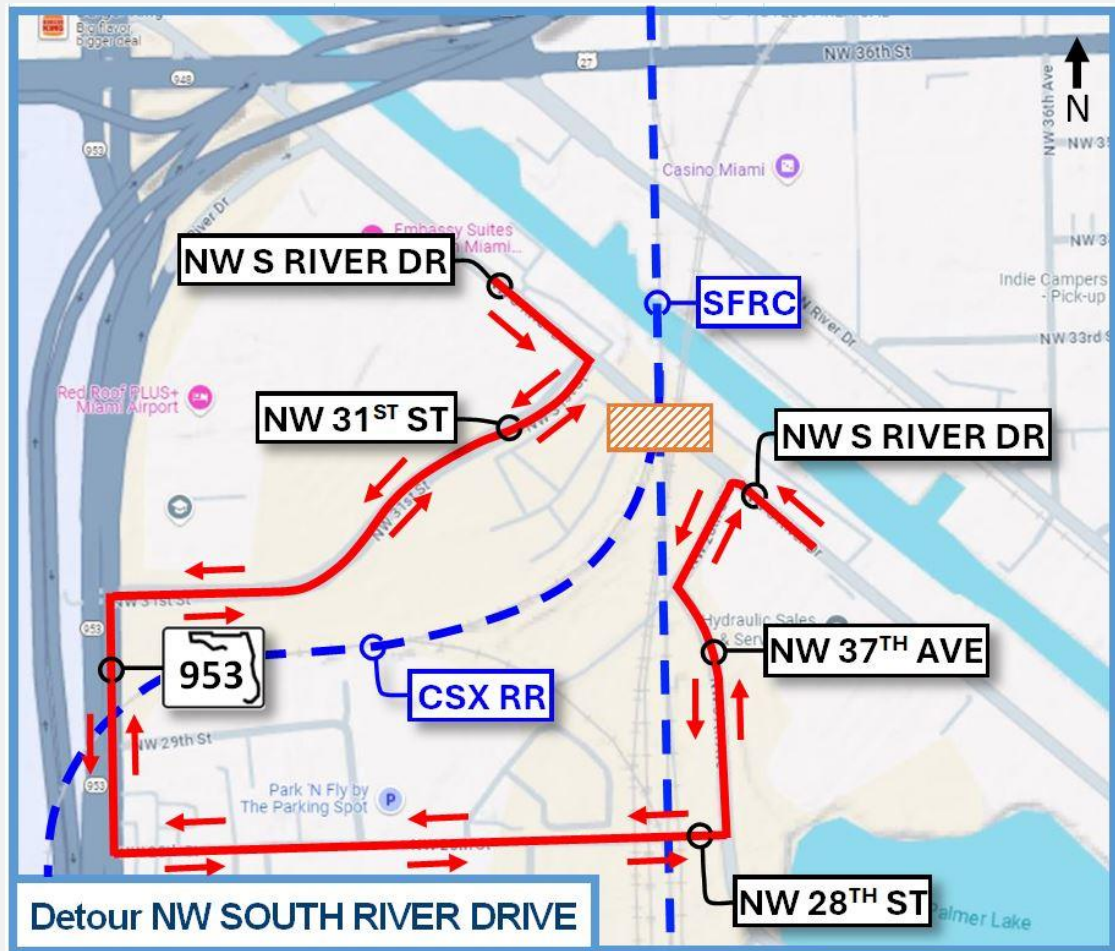




# TEMPORARY TRAFFIC CONTROL PLAN

## RAILROAD CROSSINGS RECONSTRUCTION

- Closure and Detour – NW South River Drive



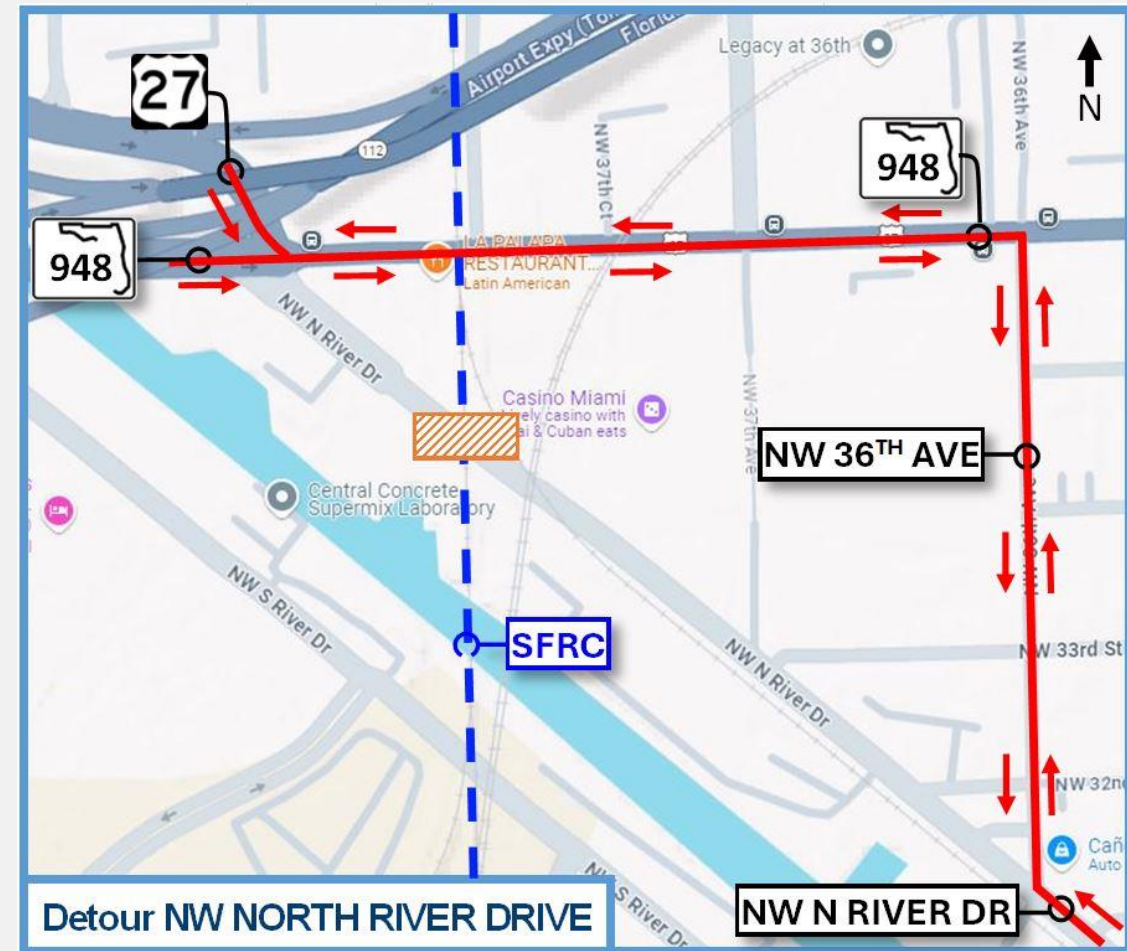
**LEGEND:**

- DETOUR
- DIRECTION OF TRAFFIC
- ▨ WORK ZONE

# TEMPORARY TRAFFIC CONTROL PLAN

## RAILROAD CROSSINGS RECONSTRUCTION

- Closure and Detour – NW North River Drive



**LEGEND:**

- DETOUR
- DIRECTION OF TRAFFIC
- ▨ WORK ZONE

Detour NW NORTH RIVER DRIVE

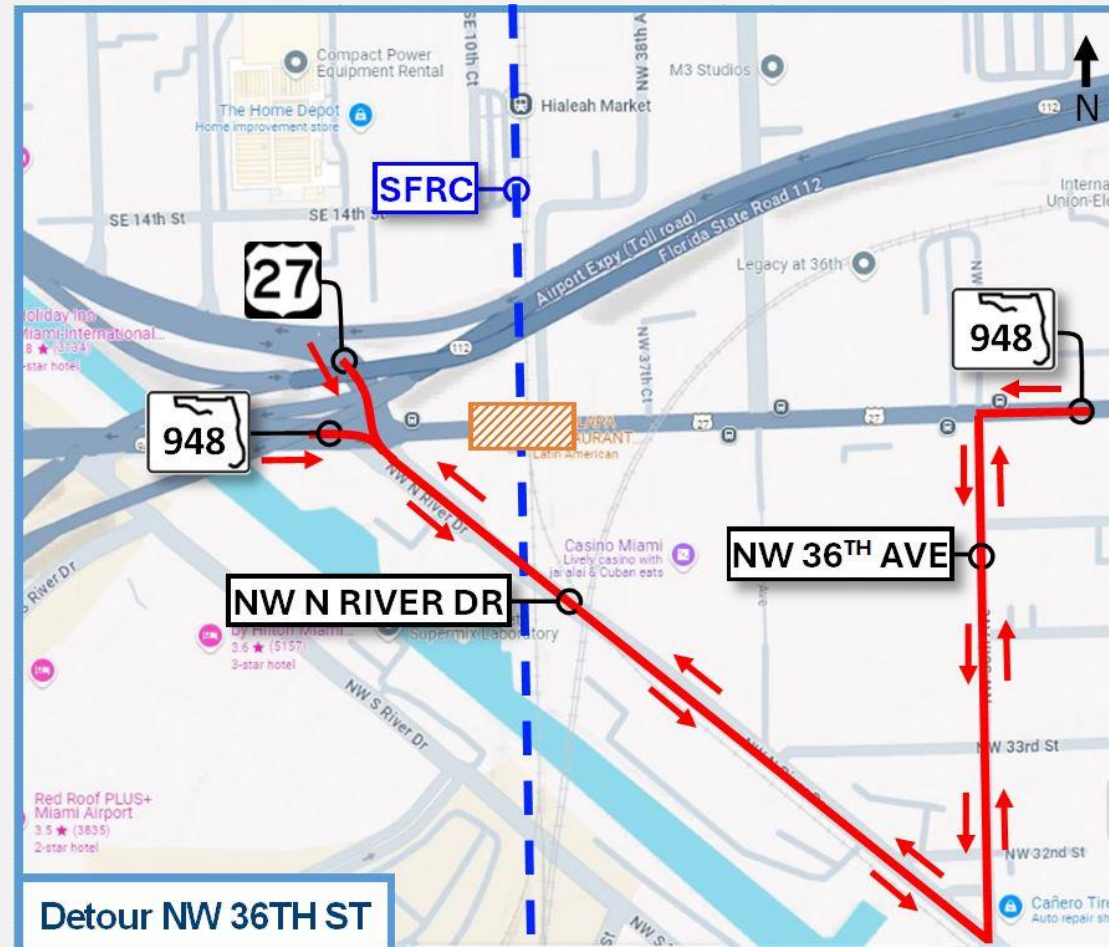
NW N RIVER DR



# TEMPORARY TRAFFIC CONTROL PLAN

## RAILROAD CROSSINGS RECONSTRUCTION

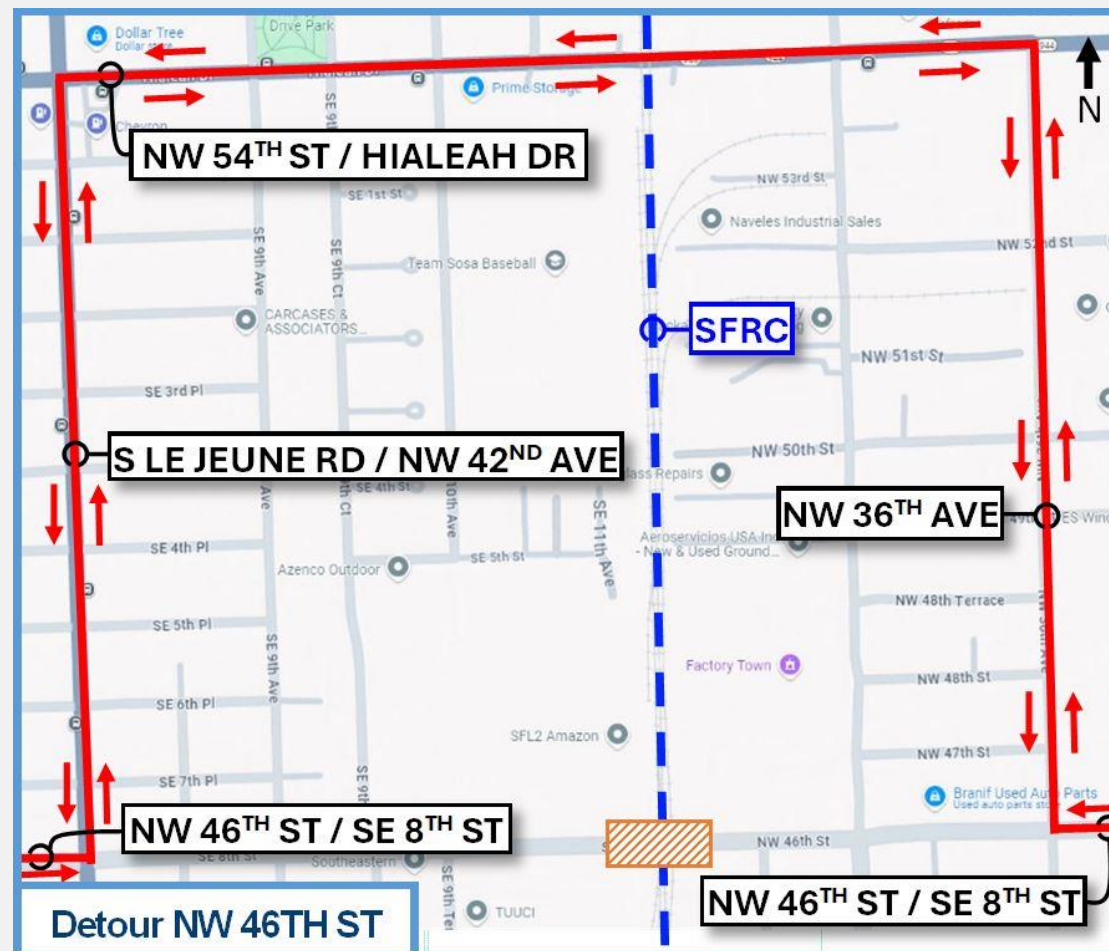
- Closure and Detour – NW 36<sup>th</sup> Street



# TEMPORARY TRAFFIC CONTROL PLAN

## RAILROAD CROSSINGS RECONSTRUCTION

- Closure and Detour – NW 46<sup>th</sup> Street



**LEGEND:**

- DETOUR
- DIRECTION OF TRAFFIC
- WORK ZONE



## Tri-Rail Hialeah Market Station

- Complete reconstruction of station site
  - Demolition of existing platform and station site
  - Construct new west track (track 2) at the station
  - Construct new center platform with canopy
  - Construct station site with amenities
- Temporary closure of station
  - Anticipated between 30 to 60 days (6 to 8 weeks)
  - Bus shuttle service to adjacent stations - Miami Airport/MIC and Metrorail Transfer
  - Notice of closure and bus shuttle provided in advance and during closure



## SCHEDULE AND COST

- Schedule
  - Biddability (90%): April 2025
  - Production: October 2025
  - Project Letting: February 2026
  - Anticipated Construction Start: Summer 2026
  - Anticipated Construction End: Spring 2029
- Project Funding
  - Estimated Construction Cost: \$85 Million
  - Construction Support (CEI and Post-Design): \$7 Million







# QUESTIONS